

# LFWLT100-CK COVER KIT



## Features

- Noncorrosive
- Easy assembly
- Low weight
- Fully safe

FOR WLT100, MWLT100, WLT150 & MWLT150 SERIES

## Derating Guidelines

WLT100/MWLT100: De-rate to 70% of values mentioned in temperature de-rating curves of open frame models at all load and ambient conditions.

WLT150/MWLT150: De-rate to 70% of values mentioned in temperature de-rating curves of open frame models at all load and ambient conditions.

## Contents

Mounting Base, Cover, Insulator, Fixing Screws

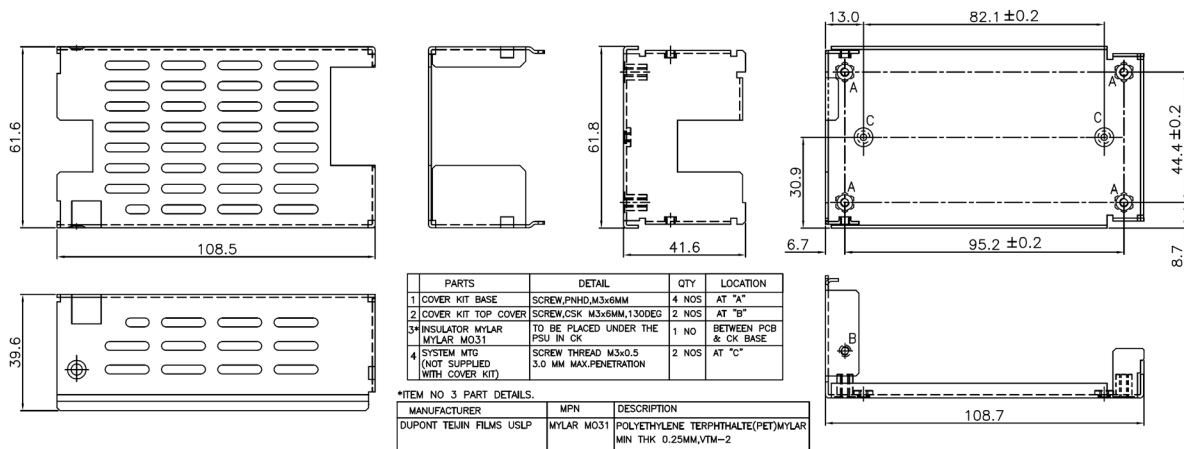
## Mechanical Dimensions

Cover and Base Material EG(Zintec)/CRCA/GI 1.0mm thick (Powder coating/ Passivation/ ED coating black)

Marked A: PCB MTG; B: COVER MTG; C: SYSTEM MTG, M3 Thread

All dimensions are in mm. General tolerance : +/-0.5

## Mechanical Drawing



WLT100-CK.  
MECHANICAL OUTLINE DIMENSIONS.